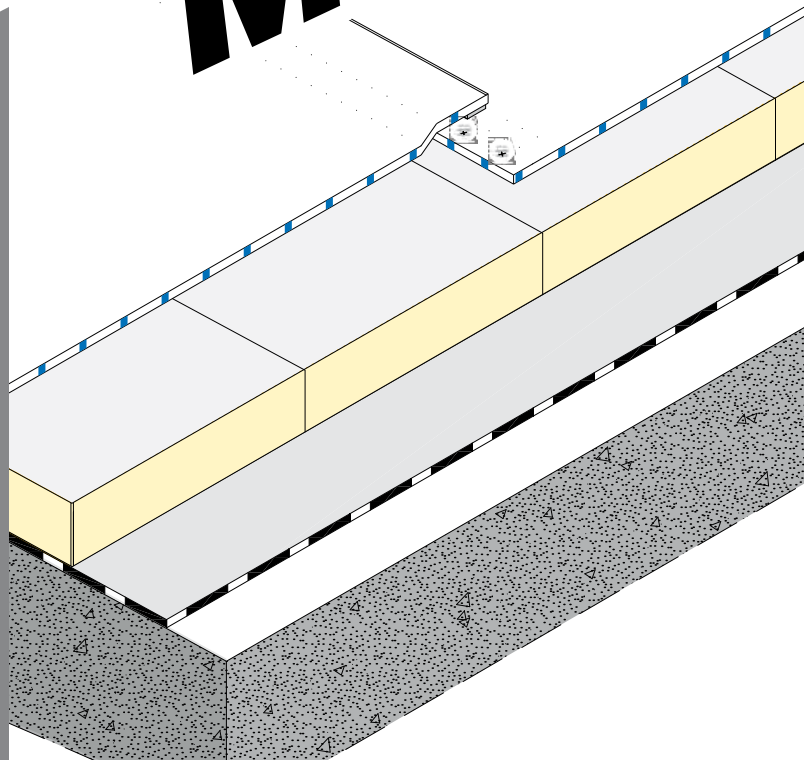


Mapeplan[®] M



Roofing and waterproofing synthetic membrane



DESCRIPTION

Mapeplan[®] M is a synthetic roofing waterproofing membrane in PVC-P produced in one **multi-extrusion coating process**, with high quality raw materials, reinforced with polyester net. Mapeplan[®] M is conform to EN 13956 standard.

APPLICATION FIELDS

Mapeplan[®] M is suitable for exposed roof installations and for mechanical fixing. It is resistant to ultraviolet rays and may be exposed to all weather conditions.

NORMS AND CERTIFICATIONS

CE conformity marking according to EN 13956 standard.
ISO 9001 quality system certification.
ISO 14001 environmental system certification.
Leed Certification (Leadership in Energy and Environmental Design).



TECHNICAL CHARACTERISTICS

Mapeplan[®] M is a high standard quality product; it performs very good mechanical properties, best workability as well as excellent welding characteristics.

- High workability and weldability
- High mechanical resistance
- Excellent flexibility at low temperatures
- Excellent resistance to ageing
- Excellent resistance to UV rays and to weathering
- High vapour permeability

PACKAGING

| | |
|-----------------|--|
| PALLET | 14 rolls per pallet |
| LENGTH OF ROLLS | 25 m 20 m 15 m (according to the thickness) |
| WIDTH OF ROLLS | 2,10 m 1,60 m 1,05 m |

STORAGE

Store horizontally, shelter from sun and bad weather in a dry place.

SAFETY INSTRUCTIONS

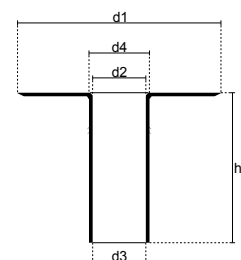
Mapeplan[®] M is not considered dangerous according to the current safety regulation for the classification of goods and substances. The safety datasheet is therefore not compulsory for the purchase, transport and application. Precaution during use: ensure a proper change of air if the application is made in closed working environments.

| TECHNICAL DATA | | | | | |
|---|--|---------------------------|---------------------------|---------------------------|--|
| PRODUCT PROPERTIES | | | | | |
| Product | Waterproofing membrane in PVC-P, reinforced with polyester net | | | | |
| Colour | Top layer: light grey Bottom layer: dark grey | | | | |
| European standard | EN 13956 | | | | |
| CHARACTERISTICS STANDARDS - M.U. | Mapeplan® M 12 | Mapeplan® M 15 | Mapeplan® M 18 | Mapeplan® M 20 | |
| Visible defects EN 1850-2 | None | None | None | None | |
| Length (m) EN 1848-2 | 25 (-0/+5%) | 20 (-0/+5%) | 15 (-0/+5%) | 15 (-0/+5%) | |
| Width (m) EN 1848-2 | 2,10/1,60/1,05 (-0,5/+1%) | 2,10/1,60/1,05 (-0,5/+1%) | 2,10/1,60/1,05 (-0,5/+1%) | 2,10/1,60/1,05 (-0,5/+1%) | |
| Straightness (mm) EN 1848-2 | ≤ 30 | ≤ 30 | ≤ 30 | ≤ 30 | |
| Flatness (mm) EN 1848-2 | ≤ 10 | ≤ 10 | ≤ 10 | ≤ 10 | |
| Mass per unit (kg/m²) EN 1849-2 | 1,5 (-5/+10%) | 1,8 (-5/+10%) | 2,2 (-5/+10%) | 2,5 (-5/+10%) | |
| Effective thickness (mm) EN 1849-2 | 1,2 (-5/+10%) | 1,5 (-5/+10%) | 1,8 (-5/+10%) | 2,0 (-5/+10%) | |
| TECHNICAL CHARACTERISTICS | Mapeplan® M 12 | Mapeplan® M 15 | Mapeplan® M 18 | Mapeplan® M 20 | |
| Water tightness (kPa/72h) EN 1928 | ≥ 400 | ≥ 400 | ≥ 400 | ≥ 400 | |
| Reaction to fire EN 13501-1 | Class E | Class E | Class E | Class E | |
| Joint peel resistance EN 12316-2 (N/50mm) | ≥ 300 | ≥ 300 | ≥ 300 | ≥ 300 | |
| Joint shear resistance EN 12317-2 (N/50mm) | ≥ 650 | ≥ 650 | ≥ 650 | ≥ 650 | |
| Vapour diffusion resistance EN 1931 (μ) | 19.000 | 19.000 | 19.000 | 19.000 | |
| Hail resistance EN 13583 (m/s) | - rigid support ≥ 18 - flexible support ≥ 25 | ≥ 20 ≥ 30 | ≥ 20 ≥ 33 | ≥ 20 ≥ 36 | |
| Tensile strength EN 12311-2 (N/50mm) | ≥ 1100 | ≥ 1100 | ≥ 1100 | ≥ 1100 | |
| Elongation EN 12311-2 (%) | ≥ 15 | ≥ 15 | ≥ 15 | ≥ 15 | |
| Resistance to impact EN 12691 (mm) | - rigid support ≥ 400 - flexible support ≥ 700 | ≥ 600 ≥ 800 | ≥ 700 ≥ 900 | ≥ 800 ≥ 950 | |
| Resistance to static load EN 12730-B (kg) | ≥ 20 | ≥ 20 | ≥ 20 | ≥ 20 | |
| Tear resistance EN 12310-2 (N) | ≥ 200 | ≥ 200 | ≥ 200 | ≥ 200 | |
| Dimensional stability EN 1107-2 (%) | ≤ 0,5 | ≤ 0,5 | ≤ 0,5 | ≤ 0,5 | |
| Foldability at low temperatures EN 495-5 (°C) | ≤ -25 | ≤ -25 | ≤ -25 | ≤ -25 | |
| UV exposure EN 1297 | grade 0 - passes | grade 0 - passes | grade 0 - passes | grade 0 - passes | |
| External fire performance Broof (t1) ENV 1187 | available upon request | available upon request | available upon request | available upon request | |

Considering the various situations of use, the numerous types of support surfaces and the possibilities for use inside COMPLEX WATERPROOF LAYERING, Polyglass SpA cannot assume any liability for damages derived from the product's results in terms of function or aesthetics.
Technical datasheet REV. 09/10

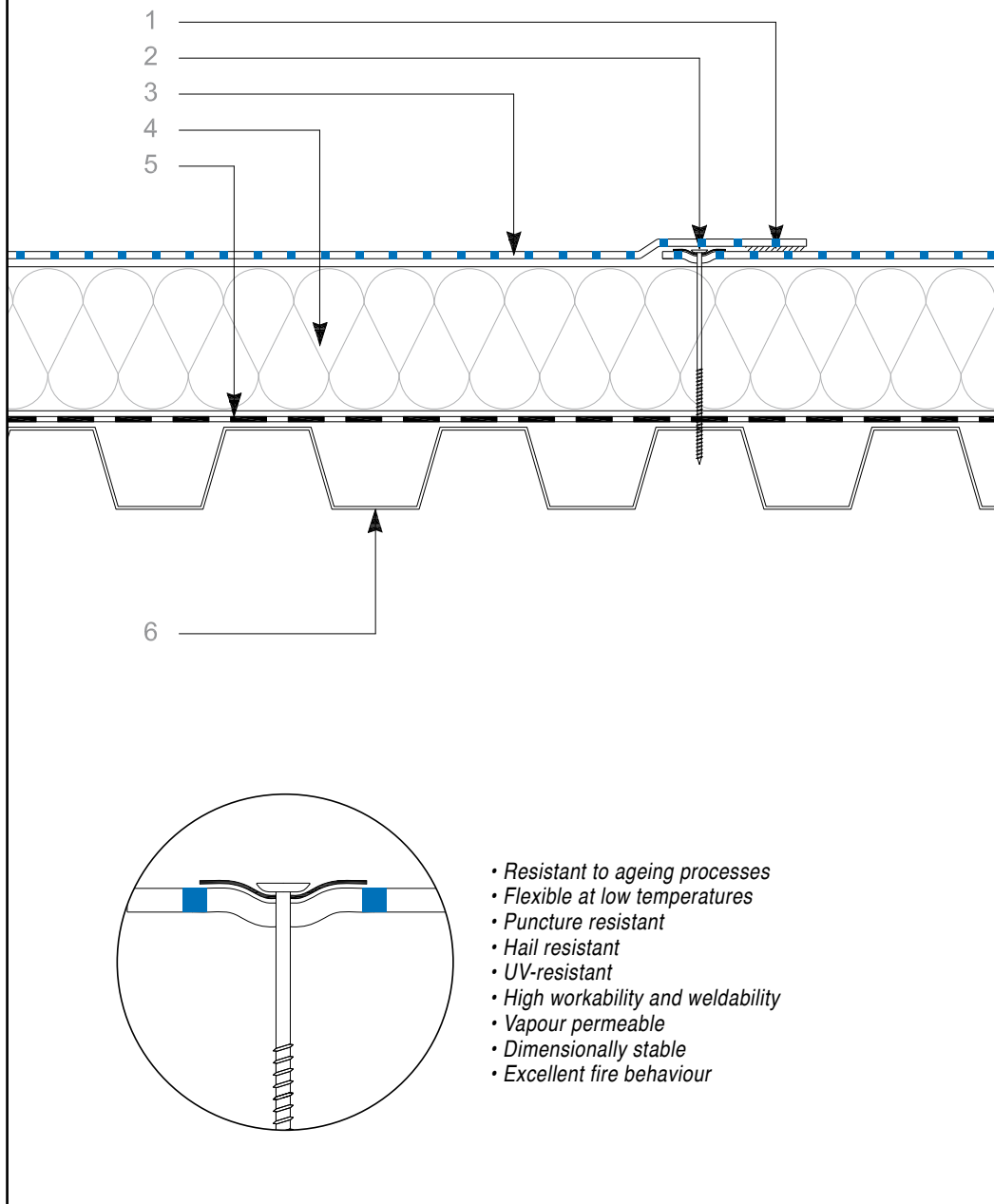
MAPEPLAN® ACCESSORIES

- Mapeplan® D, membrane for details and particulars
- Mapeplan®, metal sheets coupled to Mapeplan® membrane
- Mapeplan®, internal and external prefabricated corners
- Mapeplan® ADS 200, contact adhesives
- Mapeplan® Cleaner, cleaning liquid
- Mapeplan®, outlets and special prefabricated pieces



OUTLET

MAPEPLAN® M LAYERING



Technical specifications of product are available on the technical books.
References for this product are available on request and on Mapei and polyglass web sites at the following addresses www.mapei.it, www.mapei.com and www.polyglass.com

LEGEND

1. *Overlap/Hot air welding*
2. *Mechanical fixing system*
3. *Mapeplan® M, roofing membrane*
4. *Thermal insulation (mechanically fixed) **
5. *Vapour control layer
(for example Mapeplan® VB PE)*
6. *Substrate*

* schedule a separation layer, if required

**Mapeplan®
M**



www.mapei.com

MAPEPLAN range is produced by:



Registered Office - Viale Jenner, 4 - 20159 MILANO

Head Office - Via dell'Artigianato, 34 - 31047 Ponte di Piave (TV) - Italia
Tel. +39 04227547 - Fax +39 0422854118 - www.polyglass.com - info@polyglass.it